

Land Use Bylaw 3357/2006






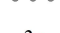




North

Scale 1:5,000

© The City of Red Deer



	Land Use District Boundary		Historical Preservation Sites
<i>R1</i>	Land Use District		Historically Significant Sites
	Exception to District	<i>HP-32</i>	Historical Site Number
<i>e(ii)</i>	Exception Number		City Boundary
	Exempted from District	<i>123</i>	Civic Address
<i>2a</i>	Exempted Number		Railway
V18	Height Overlay District		Proposed Lots
D95	Density Overlay District		
s	Secondary Suite Permitted		

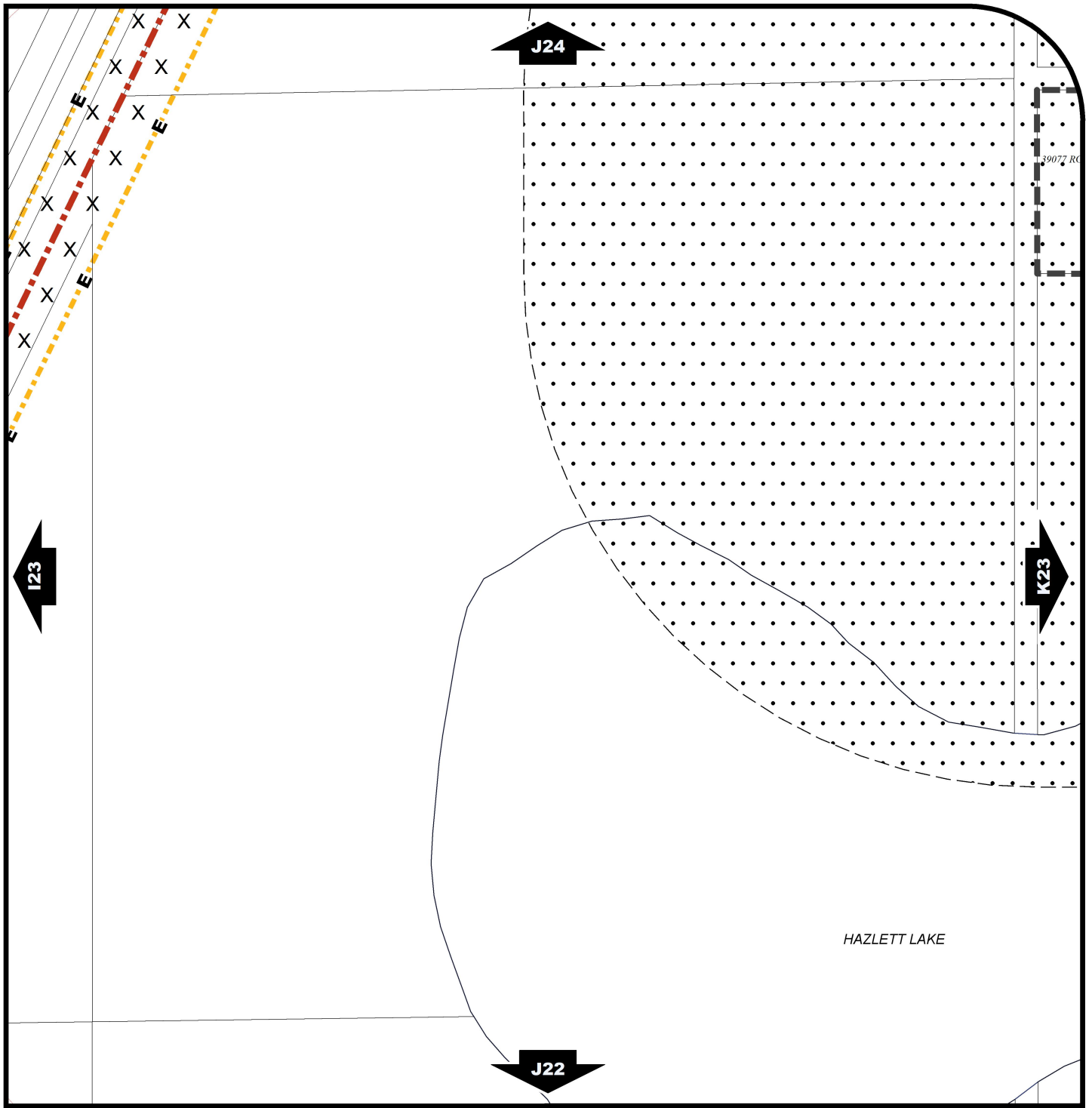
Printed on 2019/09/11

Land Use Districts

J23

NE¼ Sec5 39-27-W4

Refer to Constraints Map



Land Use Bylaw 3357/2006



North

Scale 1:5,000

© The City of Red Deer



- Escarpment Area
- Flood Fringe
- Floodway
- Landfill Site (approximate)
- Landfill Setback
- Wastewater Treatment Plant Setback
- Major Entry Area
- Pipeline Setback
- AltaLink Consultation/Potential Constraints Area
- Overlay District

- Gaetz - Ross Heritage Area
- Restricted Development Area
- Railway Setback (15m)
- Railway Setback (30m)
- Business Improvement Area
- Historical Preservation Sites
- Historically Significant Sites
- Historical Site Number
- Civic Address
- Railway

- Proposed Lots
- City Boundary

Printed on 2019/09/17

Land Use Constraints

J23

NE¼ Sec5 39-27-W4