

Land Use Bylaw 3357/2006



North

Scale 1:5,000

© The City of Red Deer



	Land Use District Boundary		Historical Preservation Sites
<i>R1</i>	Land Use District		Historically Significant Sites
	Exception to District	<i>HP-32</i>	Historical Site Number
<i>e(ii)</i>	Exception Number		City Boundary
	Exempted from District	<i>123</i>	Civic Address
<i>2a</i>	Exempted Number		Railway
V18	Height Overlay District		Proposed Lots
D95	Density Overlay District		
<i>s</i>	Secondary Suite Permitted		

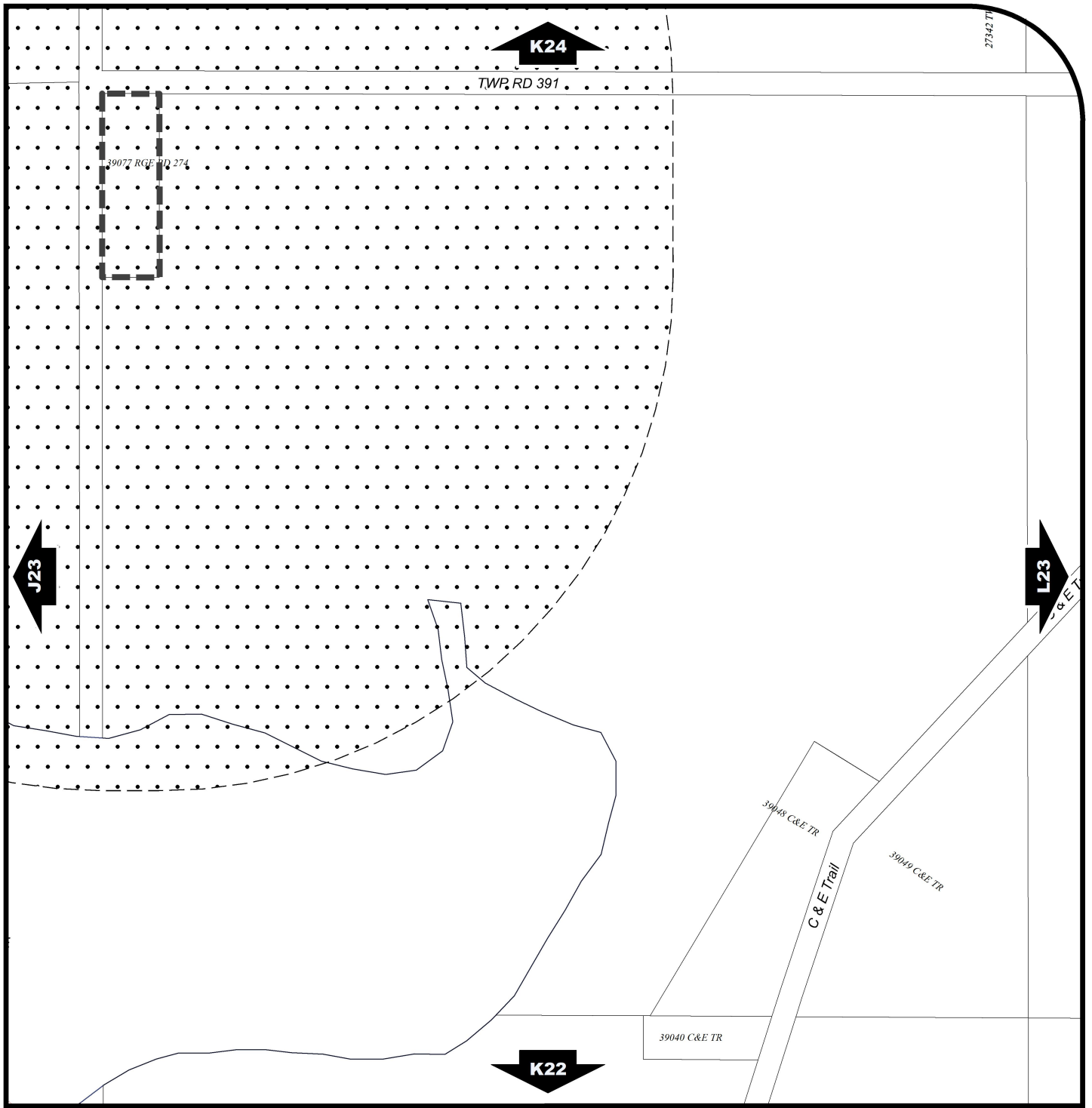
Printed on 2019/09/11

Land Use Districts

K23

NW¼ Sec4 39-27-W4

Refer to Constraints Map



Land Use Bylaw 3357/2006



North
Scale 1:5,000

© The City of Red Deer



- | | | | | | |
|--|--|--|--------------------------------|--|---------------|
| | Escarpment Area | | Gaetz - Ross Heritage Area | | Proposed Lots |
| | Flood Fringe | | Restricted Development Area | | City Boundary |
| | Floodway | | Railway Setback (15m) | | |
| | Landfill Site (approximate) | | Railway Setback (30m) | | |
| | Landfill Setback | | Business Improvement Area | | |
| | Wastewater Treatment Plant Setback | | Historical Preservation Sites | | |
| | Major Entry Area | | Historically Significant Sites | | |
| | Pipeline Setback | | Historical Site Number | | |
| | AltaLink Consultation/Potential Constraints Area | | Civic Address | | |
| | Overlay District | | Railway | | |

Printed on 2019/09/17

Land Use Constraints

K23

NW¼ Sec4 39-27-W4