

# Land Use Bylaw 3357/2006

North



Scale 1:5,000

© The City of Red Deer



- |              |                        |              |                                |
|--------------|------------------------|--------------|--------------------------------|
|              | Land Use Zone Boundary |              | Historical Preservation Sites  |
| <b>R-L</b>   | Land Use Zone          |              | Historically Significant Sites |
|              | Exception to Zone      | <i>HP-32</i> | Historical Site Number         |
| <i>e(ii)</i> | Exception Number       |              | City Boundary                  |
|              | Exempted from Zone     | <i>123</i>   | Civic Address                  |
| <i>2a</i>    | Exempted Number        |              | Railway                        |
| <i>V18</i>   | Height Overlay Zone    |              | Proposed Lots                  |
| <i>D95</i>   | Density Overlay Zone   |              |                                |
| <i>S</i>     | Suite Locations        |              |                                |

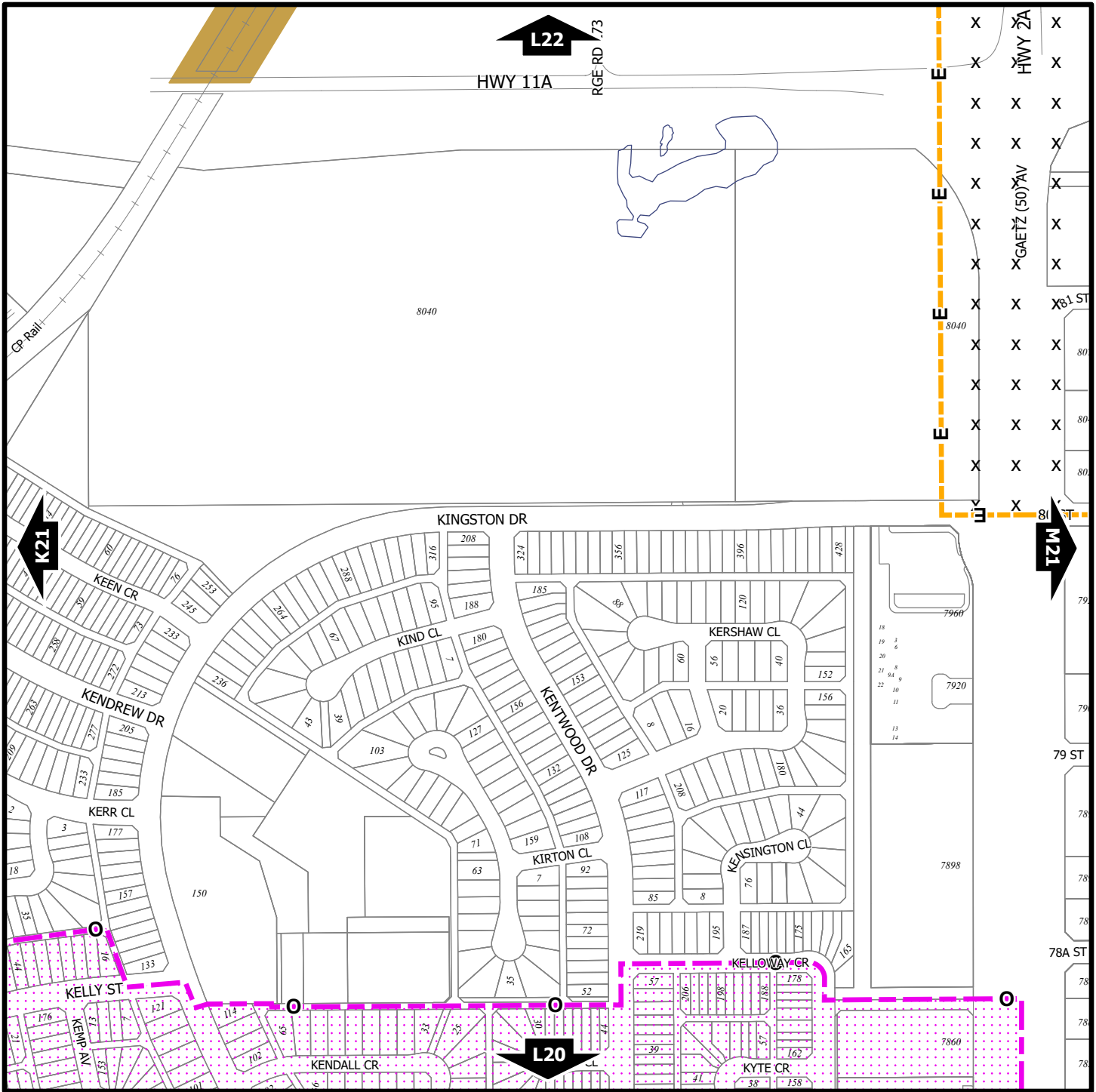
Printed on April 19, 2024

Land Use Zones

**L21**

NE¼ Sec32 38-27-W4

Refer to Constraints Map



# Land Use Bylaw 3357/2006

North



Scale 1:5,000  
© The City of Red Deer



- AC AltaLink Consultation/  
Potential Constraints Area
- B Business Improvement Area
- Escarpment Area
- Flood Fringe
- Floodway
- G Gaetz - Ross Heritage Area
- HP-32 Historical Preservation Sites
- Historically Significant Sites
- HP-32 Historical Site Number

- Landfill Site (approximate)
- Landfill Setback
- E Major Entry Area
- O Overlay District
- RDA Restricted Development Area
- PS Pipeline Setback
- Wastewater Treatment  
Plant Setback
- Railway Setback (15m)
- Railway Setback (30m)

- 123 Civic Address
- Proposed Lots
- ++++ Railway
- - - - City Boundary

Printed on April 08, 2024

**Land Use Constraints**  
**L21**  
NE¼ Sec32 38-27-W4