

Land Use Bylaw 3357/2006



North

Scale 1:5,000

© The City of Red Deer



	Land Use District Boundary		Historical Preservation Sites
<i>R1</i>	Land Use District		Historically Significant Sites
	Exception to District	<i>HP-32</i>	Historical Site Number
<i>e(ii)</i>	Exception Number		City Boundary
	Exempted from District	<i>123</i>	Civic Address
<i>2a</i>	Exempted Number		Railway
V18	Height Overlay District		Proposed Lots
D95	Density Overlay District		
s	Secondary Suite Permitted		

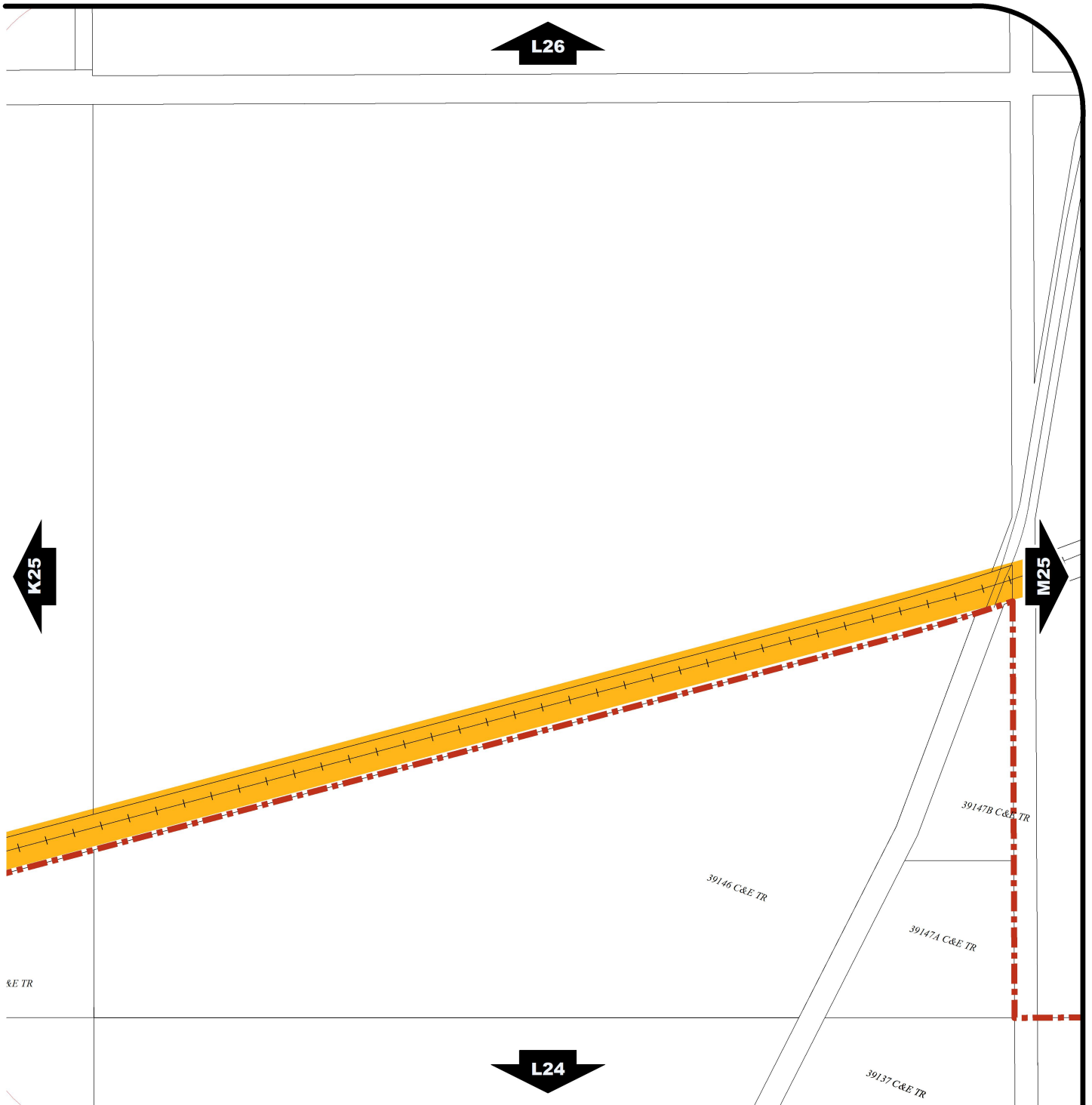
Printed on 2016/02/04

Land Use Districts

L25

NE¼ Sec9 39-27-W4

Refer to Constraints Map



Land Use Bylaw 3357/2006



North

Scale 1:5,000

© The City of Red Deer



- | | | | | | |
|--|--|--|--------------------------------|--|---------------|
| | Escarpment Area | | Subdivision Consideration | | Railway |
| | Flood Fringe | | Restricted Development Area | | Proposed Lots |
| | Floodway | | Railway Setback (15m) | | City Boundary |
| | Landfill Site (approximate) | | Railway Setback (30m) | | |
| | Landfill Setback | | Unknown Flood Risk | | |
| | Major Entry Area | | Business Revitalization Zone | | |
| | Pipeline Setback | | Historical Preservation Sites | | |
| | AltaLink Consultation/Potential Constraints Area | | Historically Significant Sites | | |
| | Overlay District | | Historically Significant Sites | | |
| | Gaetz - Ross Heritage Area | | Historical Site Number | | |
| | | | Civic Address | | |

Printed on 2016/02/04

Land Use Constraints

L25

NE¼ Sec9 39-27-W4