

Land Use Bylaw 3357/2006



North

Scale 1:5,000

© The City of Red Deer



- | | | | |
|--|----------------------------|--|--------------------------------|
| | Land Use District Boundary | | Historical Preservation Sites |
| | Land Use District | | Historically Significant Sites |
| | Exception to District | | Historical Site Number |
| | Exception Number | | City Boundary |
| | Exempted from District | | Civic Address |
| | Exempted Number | | Railway |
| | Height Overlay District | | Proposed Lots |
| | Density Overlay District | | |
| | Secondary Suite Permitted | | |

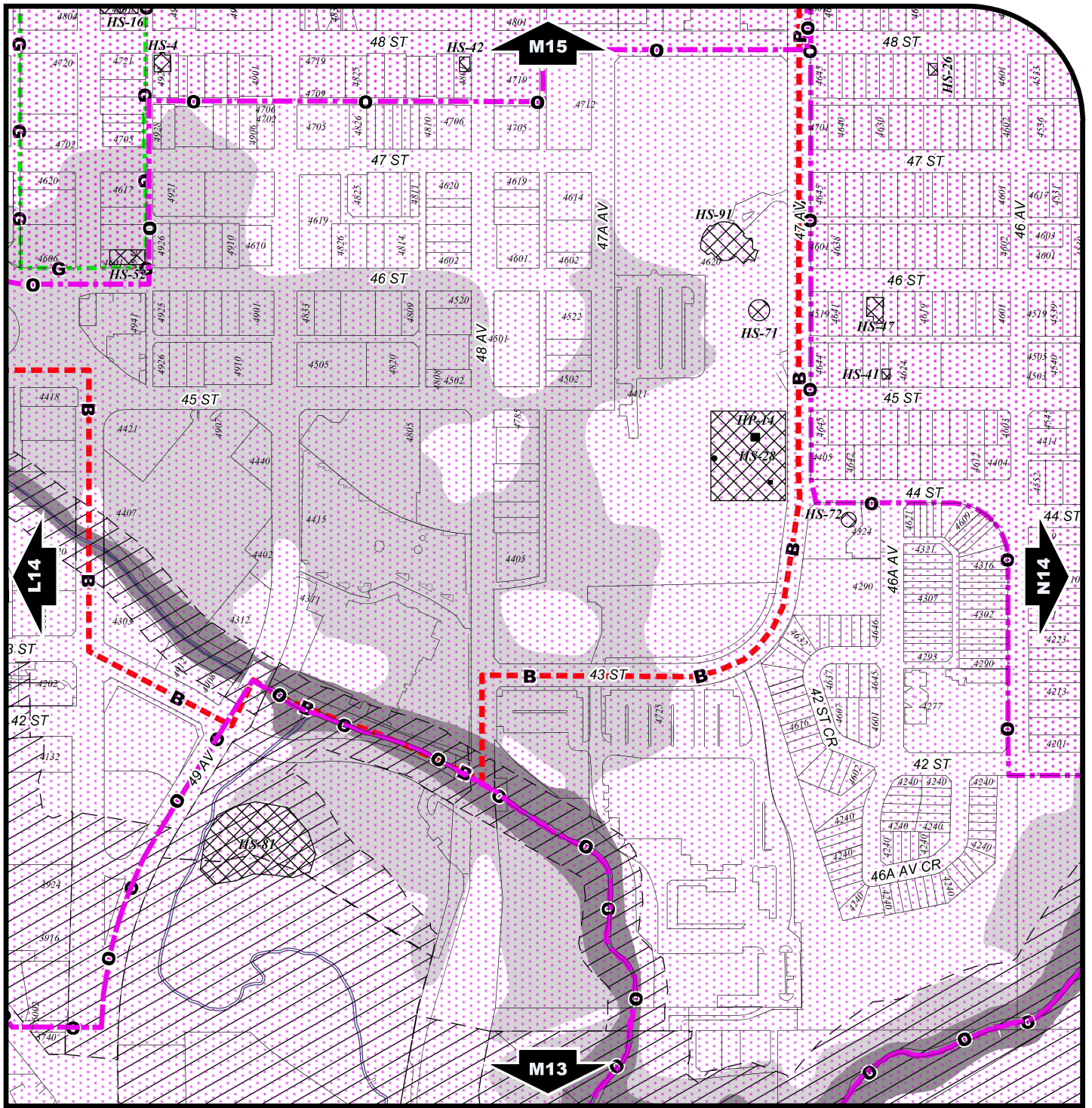
Printed on 2021/03/01

Land Use Districts

M14

SW¼ Sec16 38-27-W4

Refer to Constraints Map



Land Use Bylaw 3357/2006



North

Scale 1:5,000

© The City of Red Deer



- | | | |
|--|--------------------------------|---------------|
| Escarpment Area | Gaetz - Ross Heritage Area | Proposed Lots |
| Flood Fringe | Restricted Development Area | City Boundary |
| Floodway | Railway Setback (15m) | |
| Landfill Site (approximate) | Railway Setback (30m) | |
| Landfill Setback | Business Improvement Area | |
| Wastewater Treatment Plant Setback | Historical Preservation Sites | |
| Major Entry Area | Historically Significant Sites | |
| Pipeline Setback | Historical Site Number | |
| AltaLink Consultation/Potential Constraints Area | Civic Address | |
| Overlay District | Railway | |

Printed on 2021/03/01

Land Use Constraints

M14

SW¼ Sec16 38-27-W4