

Land Use Bylaw 3357/2006



North

Scale 1:5,000

© The City of Red Deer



- | | | | |
|--|----------------------------|--|--------------------------------|
| | Land Use District Boundary | | Historical Preservation Sites |
| | Land Use District | | Historically Significant Sites |
| | Exception to District | | Historical Site Number |
| | Exception Number | | City Boundary |
| | Exempted from District | | Civic Address |
| | Exempted Number | | Railway |
| | Height Overlay District | | Proposed Lots |
| | Density Overlay District | | |
| | Secondary Suite Permitted | | |

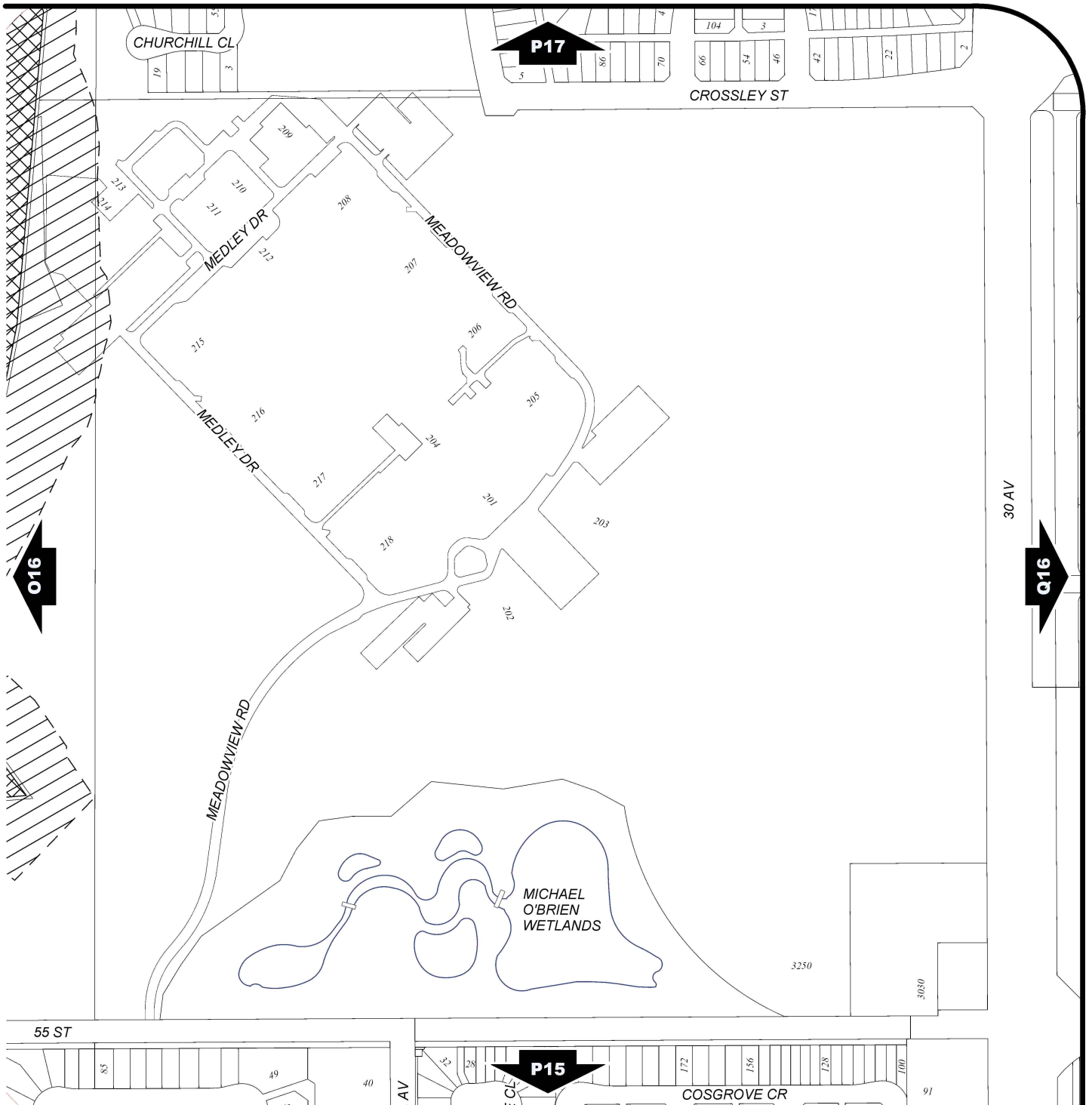
Printed on Mar 16, 2010

Land Use Districts

P16

SE¼ Sec22 38-27-W4

Refer to Constraints Map



Land Use Bylaw 3357/2006



North

Scale 1:5,000

© The City of Red Deer



- | | | | |
|--|------------------------------|--|--------------------------------|
| | Escarpment Area | | Historical Preservation Sites |
| | Flood Fringe | | Historically Significant Sites |
| | Floodway | | Historical Site Number |
| | Landfill Site (approximate) | | City Boundary |
| | Landfill Setback | | Civic Address |
| | Major Entry Area | | Railway |
| | Overlay District | | Proposed Lots |
| | Gaetz - Ross Heritage Area | | |
| | Business Revitalization Zone | | |

Printed on Mar 16, 2010

Land Use Constraints

P16

SE¼ Sec22 38-27-W4