

Land Use Bylaw 3357/2006



North

Scale 1:5,000

© The City of Red Deer



- | | | | |
|--|----------------------------|--|--------------------------------|
| | Land Use District Boundary | | Historical Preservation Sites |
| | Land Use District | | Historically Significant Sites |
| | Exception to District | | Historical Site Number |
| | Exception Number | | City Boundary |
| | Exempted from District | | Civic Address |
| | Exempted Number | | Railway |
| | Height Overlay District | | Proposed Lots |
| | Density Overlay District | | |
| | Secondary Suite Permitted | | |

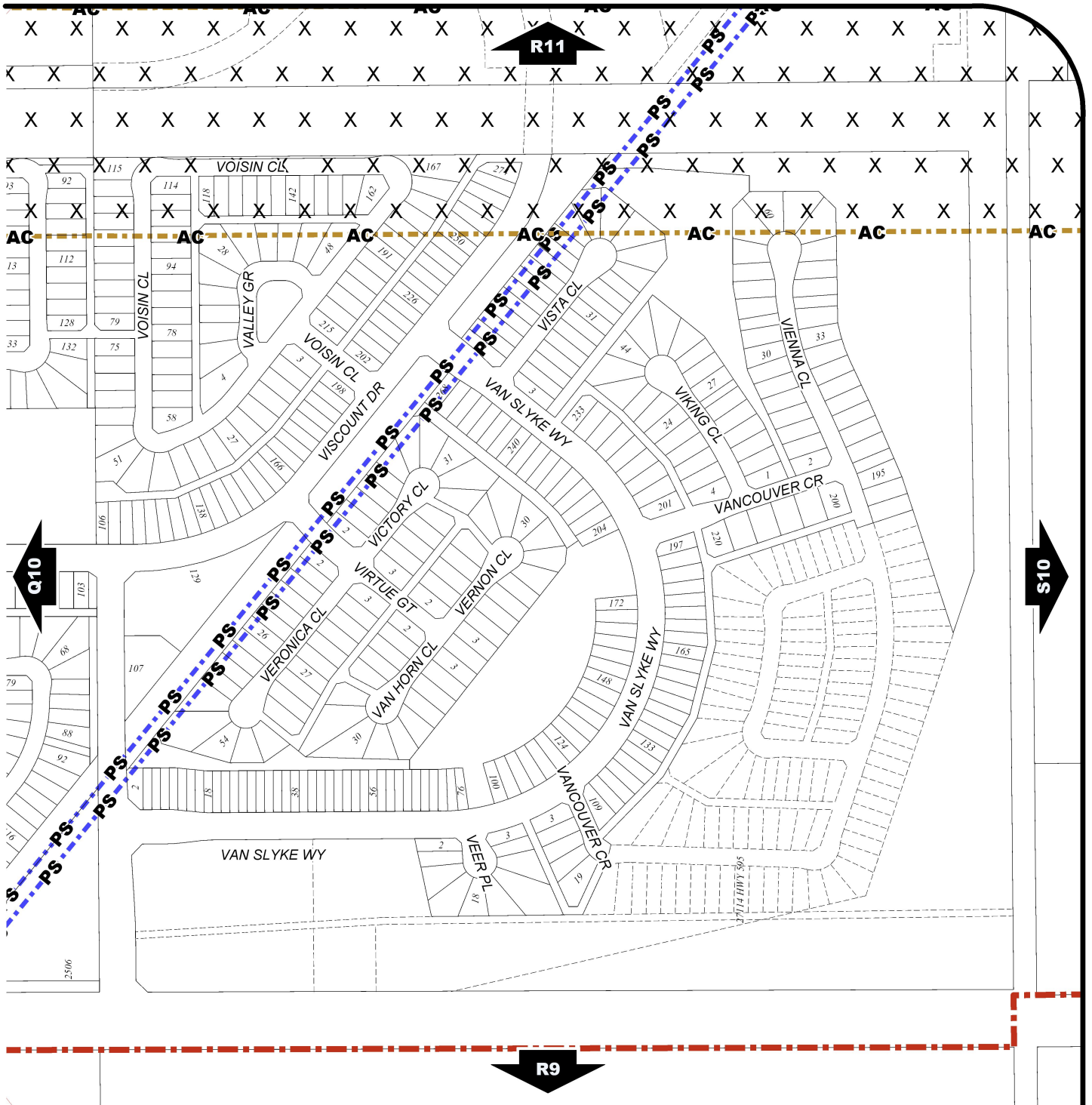
Printed on Jun 18, 2013

Land Use Districts

R10

SE¼ Sec2 38-27-W4

Refer to Constraints Map



Land Use Bylaw 3357/2006



North

Scale 1:5,000

© The City of Red Deer



- | | | | |
|--|--|--|--------------------------------|
| | Escarpment Area | | Gaetz - Ross Heritage Area |
| | Flood Fringe | | Business Revitalization Zone |
| | Floodway | | Historical Preservation Sites |
| | Landfill Site (approximate) | | Historically Significant Sites |
| | Landfill Setback | | Historical Site Number |
| | Major Entry Area | | City Boundary |
| | TransCanada Pipeline Setback | | Civic Address |
| | AltaLink Consultation/Potential Constraints Area | | Railway |
| | Overlay District | | Proposed Lots |

Printed on Jun 18, 2013

Land Use Constraints
R10
 SE¼ Sec2 38-27-W4