

# Land Use Bylaw 3357/2006



North

Scale 1:5,000

© The City of Red Deer



|       |                            |         |                                |
|-------|----------------------------|---------|--------------------------------|
|       | Land Use District Boundary |         | Historical Preservation Sites  |
| R1    | Land Use District          |         | Historically Significant Sites |
|       | Exception to District      | 1000    | Historical Site Number         |
| 1000  | Exception Number           | ---     | City Boundary                  |
| • • • | Exempted from District     | 123     | Civic Address                  |
| 2a    | Exempted Number            | —+—+—+— | Railway                        |
| V18   | Height Overlay District    | ---     | Proposed Lots                  |
| D95   | Density Overlay District   |         |                                |
| s     | Secondary Suite Permitted  |         |                                |

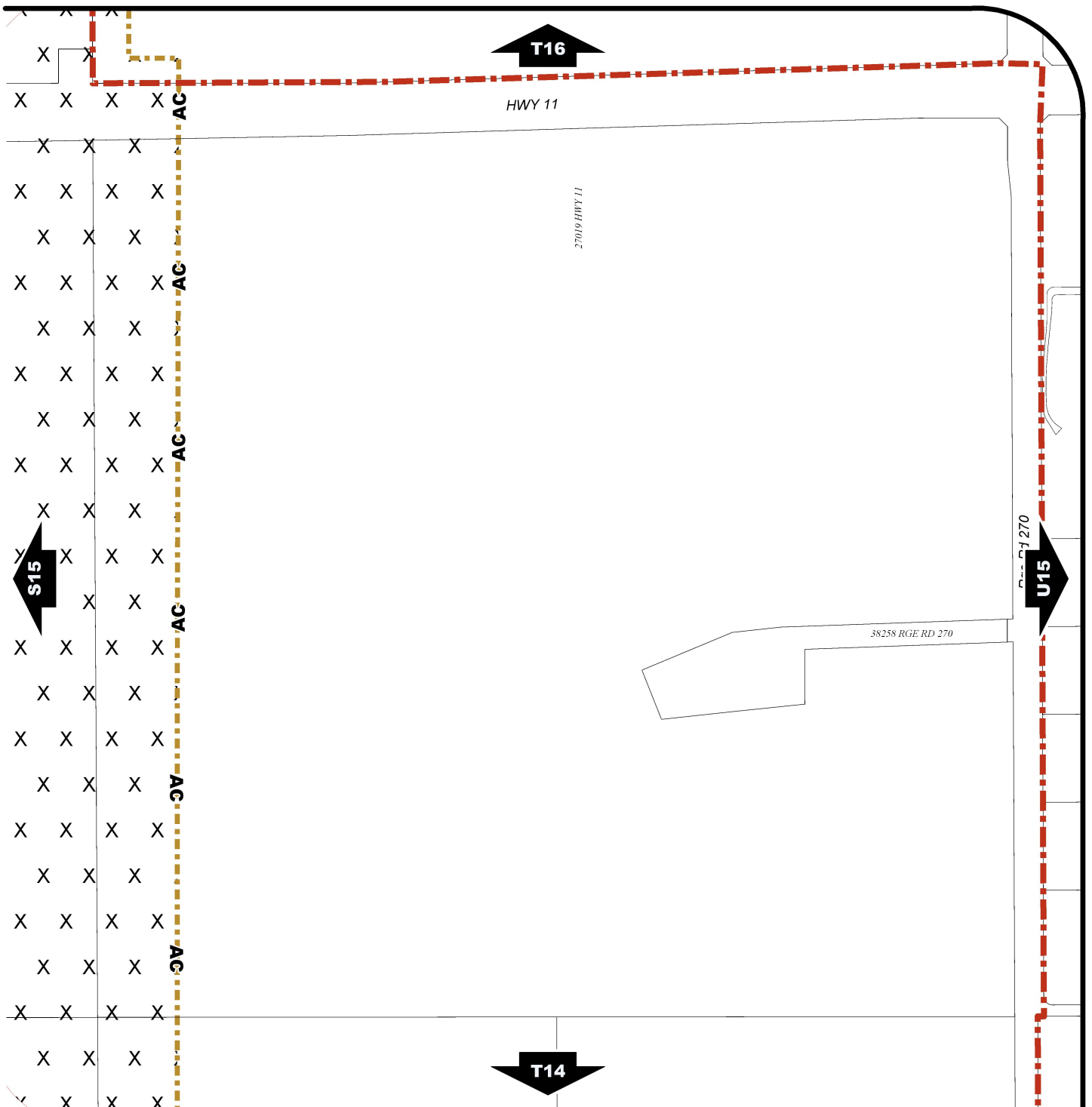
Printed on Jun 18, 2013

Land Use Districts

**T15**

NE¼ Sec13 38-27-W4

Refer to Constraints Map



# Land Use Bylaw 3357/2006



North

Scale 1:5,000

© The City of Red Deer



- |  |  |              |                                |
|--|--|--------------|--------------------------------|
|  | Escarpment Area                                  |              | Gaetz - Ross Heritage Area     |
|  | Flood Fringe                                     |              | Business Revitalization Zone   |
|  | Floodway   |              | Historical Preservation Sites  |
|  | Landfill Site (approximate)                      |              | Historically Significant Sites |
|  | Landfill Setback                                 | <i>HP-32</i> | Historical Site Number         |
|  | Major Entry Area                                 |              | City Boundary                  |
|  | TransCanada Pipeline Setback                     | <i>123</i>   | Civic Address                  |
|  | AltaLink Consultation/Potential Constraints Area |              | Railway                        |
|  | Overlay District                                 |              | Proposed Lots                  |

Printed on Jun 18, 2013

Land Use Constraints

**T15**

NE¼ Sec13 38-27-W4