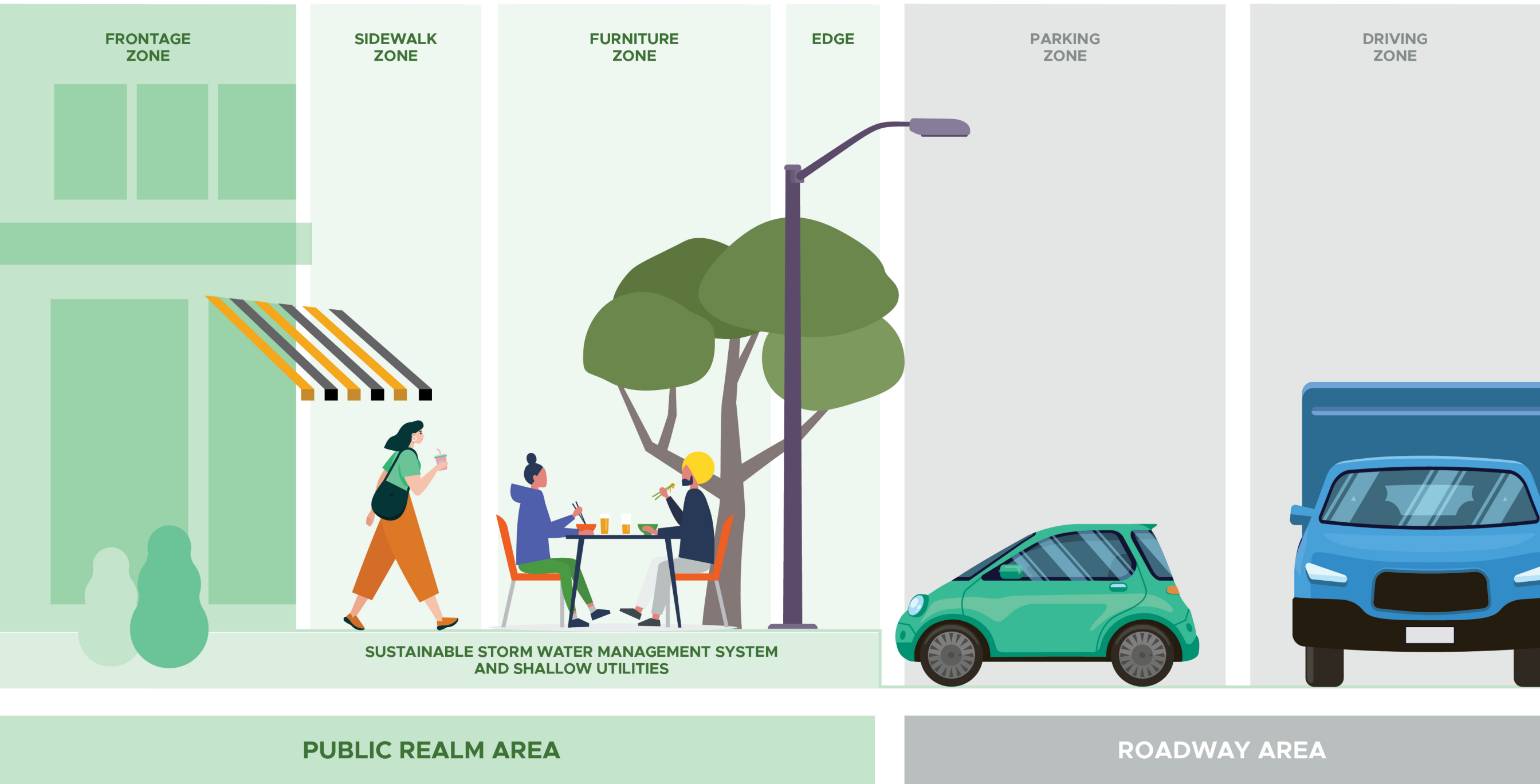
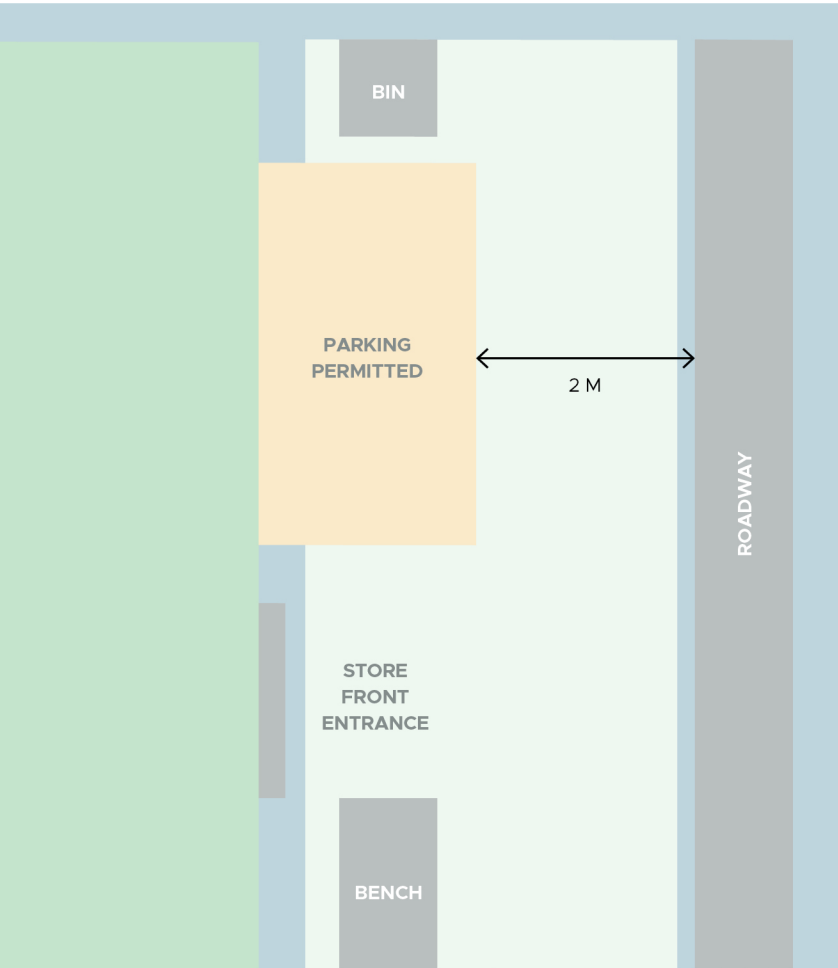


PARKING ZONES FOR E-SCOOTERS





SIDEWALK PARKING

License Holders must have E-Scooters that have an internal electric lock and does not require the E-Scooters to be locked to stationary items. Proper sidewalk parking would be:

1. E-Scooters are parked in a Furniture Zone and must not be parked in a way that obstructs or interferes in the Sidewalk Zone or Edge Zone at any time;
2. In the absence of a Furniture Zone, E-Scooters must not be parked in a way that impedes pedestrians moving through the Sidewalk Zone to access any buildings. E-Scooters must be parked next to the Edge Zone leaving at least 2.0 metres of Sidewalk Zone unobstructed for pedestrian movements. E-Scooters must not be parked where these minimum distance requirements cannot be met; and
3. Parked in the upright, standing position, with all wheels in contact with the ground.

STREET PARKING

E-Scooters must not be parked on the street. E-Scooters must not be parked in a way that impedes vehicular traffic from moving on the roadway or accessing driveways and must not be parked in the Driving Zone at any time. E-Scooters must not be parked in locations within or on:

1. Loading zones;
2. Accessible parking zones;
3. Wheelchair ramps, bicycle ramps or curb ramps;
4. Bridges;
5. Center median islands;
6. Within 1.5 metres of an access to a garage or driveway;
7. Street furniture that requires pedestrian access (benches, pay parking station, bus shelters);
8. Within shrub beds or within 0.5 metres of trees; or
9. Within City parking spaces.

E-Scooters must not be parked on a pathway or within 1.0 metre of either side of a pathway. The City of Red Deer may create designated parking areas where E-Scooter parking causes concerns for operations or the public.

