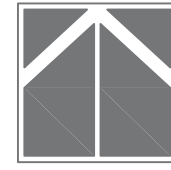


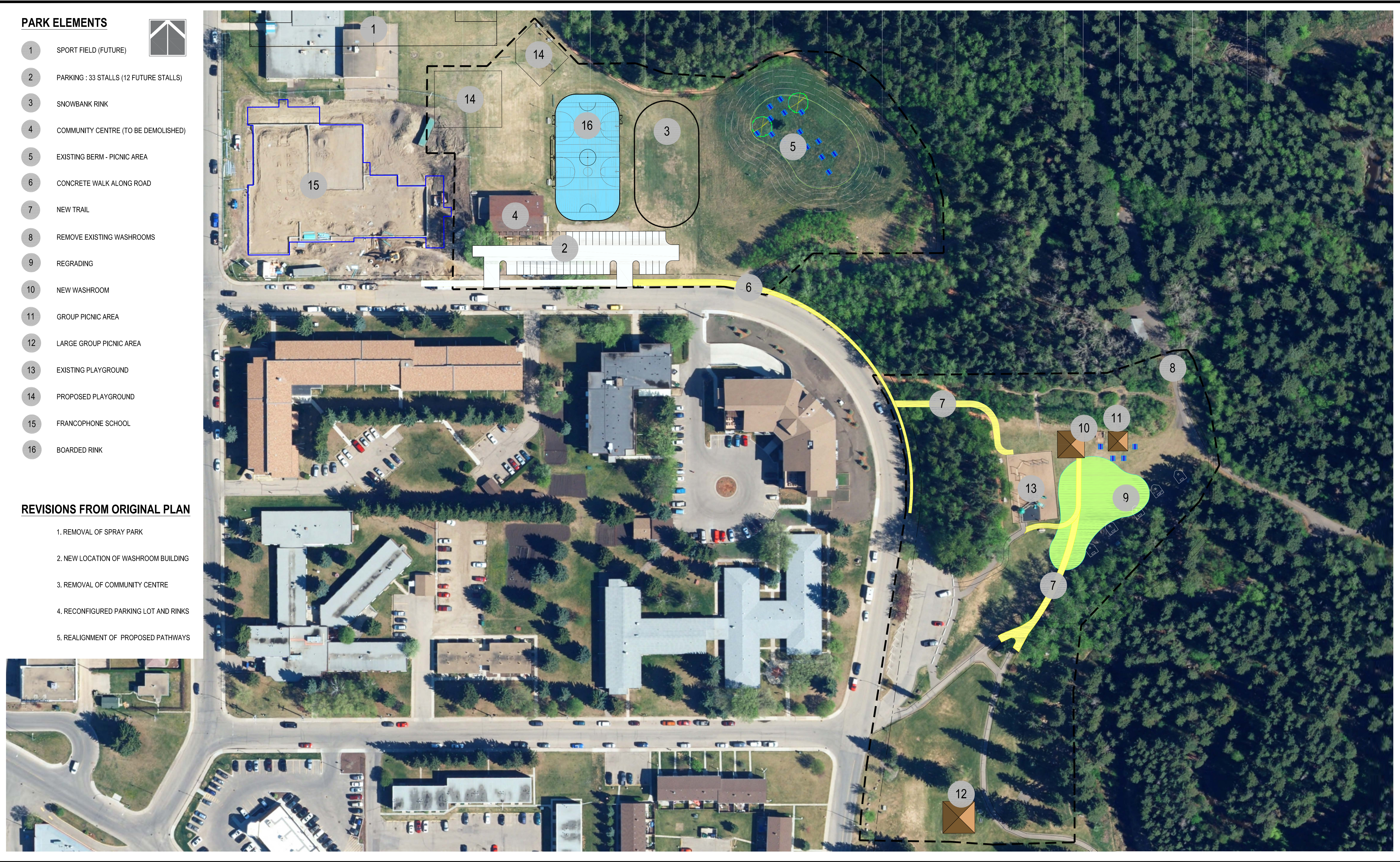
PARK ELEMENTS



- 1 SPORT FIELD (FUTURE)
- 2 PARKING : 33 STALLS (12 FUTURE STALLS)
- 3 SNOWBANK RINK
- 4 COMMUNITY CENTRE (TO BE DEMOLISHED)
- 5 EXISTING BERM - PICNIC AREA
- 6 CONCRETE WALK ALONG ROAD
- 7 NEW TRAIL
- 8 REMOVE EXISTING WASHROOMS
- 9 REGRADING
- 10 NEW WASHROOM
- 11 GROUP PICNIC AREA
- 12 LARGE GROUP PICNIC AREA
- 13 EXISTING PLAYGROUND
- 14 PROPOSED PLAYGROUND
- 15 FRANCOPHONE SCHOOL
- 16 BOARDED RINK

REVISIONS FROM ORIGINAL PLAN

- 1. REMOVAL OF SPRAY PARK
- 2. NEW LOCATION OF WASHROOM BUILDING
- 3. REMOVAL OF COMMUNITY CENTRE
- 4. RECONFIGURED PARKING LOT AND RINKS
- 5. REALIGNMENT OF PROPOSED PATHWAYS



J:\2014 Projects\14075 - Kin Canyon Updates\02_CADD\20_Drafting\12875_FinalCONCEPT_Figures.dwg